

TrainingDump

Try **Desktop Test Engine** before you buy


Online Test Engine: Online Tool, Convenient, easy to study. Instant Online Access. Supports All Web Browsers.


PDF format: Easy to read and print learning materials, our products are available in PDF file format.


Desktop Test Engine: Installable Software Application. Simulates Real Exam Environment. Practice Offline Anytime.




Choose the version that fits your needs	PDF Version	Desktop Test Engine	Online Test Engine
Latest and Up-to-Date exam dumps with real exam questions answers.	✓	✓	✓
Get 12-Months free updates without any extra charges.	✓	✓	✓
Experience same exam environment before appearing in the certification exam.	✗	✓	✓
100% exam passing guarantee in the first attempt.	✓	✓	✓
20% discount on more than one license and 30% discount on 5+ license purchases.	✗	✓	✓
100% secure purchase on SSL.	✓	✓	✓
Completely private purchase without sharing your personal info with anyone.	✓	✓	✓


48923+
Happy Clients


48923+
Shares


97846+
Downloads


9999+
Years in Business

<http://www.trainingdump.com/>

Everything you need to prepare, learn & pass your certification exam easily.

Exam : **HP0-Y51**

Title : Building HP SDN and
FlexNetwork Solutions

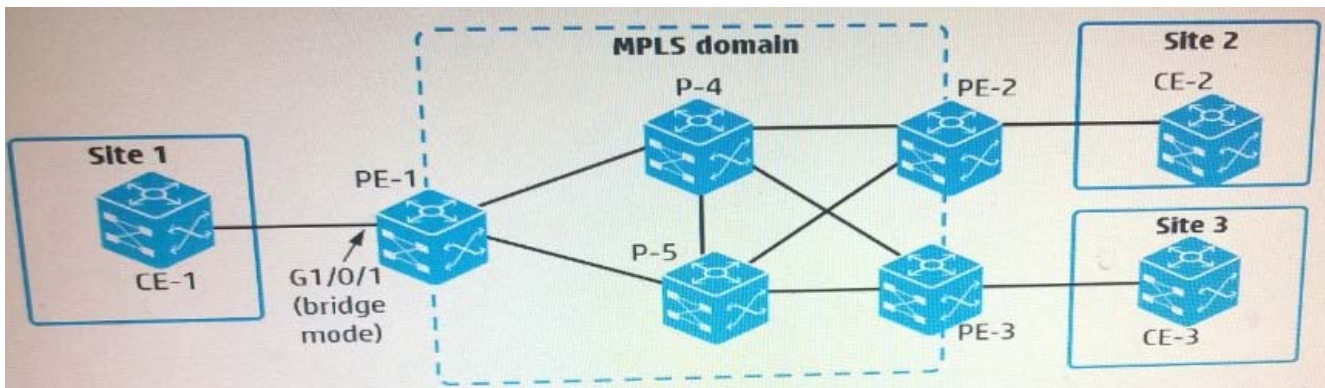
Vendor : HP

Version : DEMO

NO.1 Table of acronyms

EVI	Ethernet Virtual Interconnect
FCoE	Fibre Channel over Ethernet
L2VPN	Layer 2 Virtual Private Network
MDC	Multitenant Device Context
MPLS	Multiprotocol Label Switching
SPBM	Shortest Path Bridging MAC-in-MAC mode
TRILL	Transparent Interconnection of Lots of Links
VPLS	Virtual Private LAN Service
VPN	Virtual Private Network
LDP	Label Distribution Protocol

Refer to the exhibit.

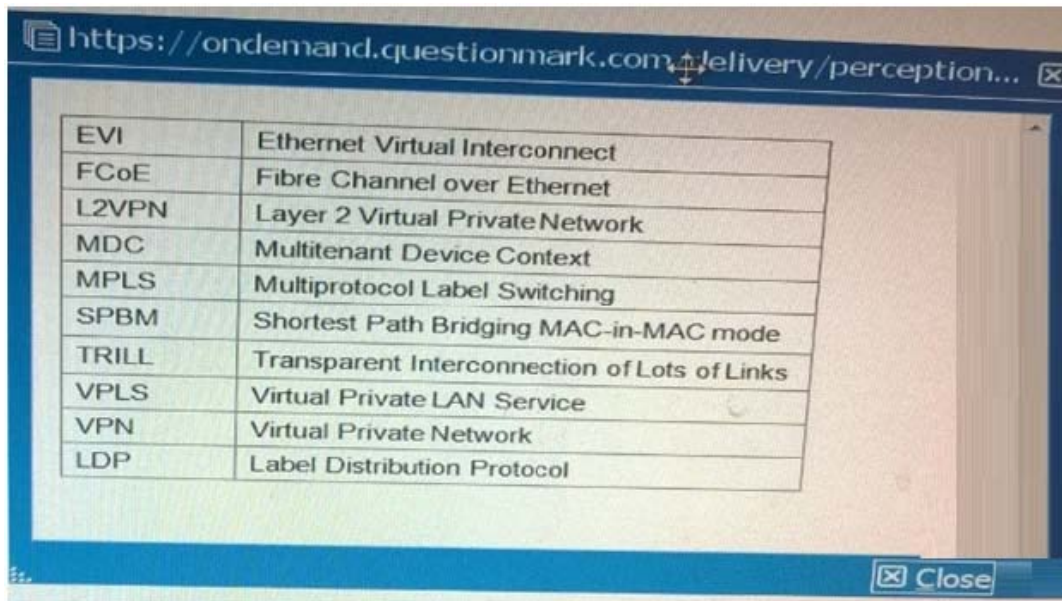


An administrator is setting up an MPLS and L2VPN virtual circuit (VC) between customer Site 1 and Site 2. The administrator is creating a global cross-connect group, which uses LDP signaling, on PE-1. Which two elements are required to do this?

- A. An AC connection (specifies a service instance on g1/0/1) and a peer (PE-2)
- B. A peer (PE-2) and a VPN instance (associated with g1/0/1)
- C. A peer (PE-2) and a VLAN ID (access VLAN or. g1/0/1)
- D. An AC connection (specifies a service instance on g1/0/1) and a VPN instance (associated with g1/0/1)

Answer: B,D

NO.2 Table of Acronyms Which common data center requirement does an HP EVI solution meet?



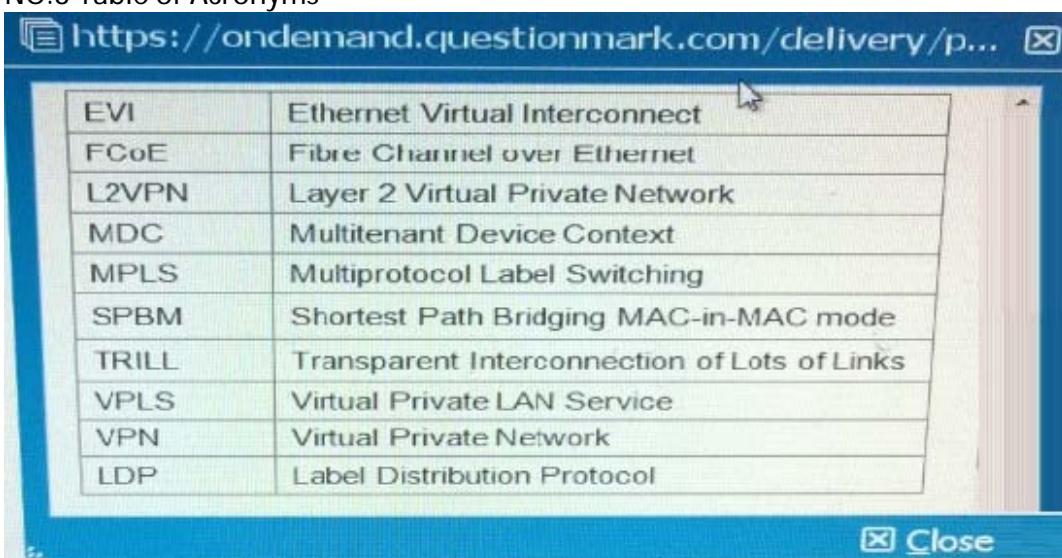
The screenshot shows a web browser window with the URL <https://ondemand.questionmark.com/delivery/perception...>. The browser displays a table with the following content:

EVI	Ethernet Virtual Interconnect
FCoE	Fibre Channel over Ethernet
L2VPN	Layer 2 Virtual Private Network
MDC	Multitenant Device Context
MPLS	Multiprotocol Label Switching
SPBM	Shortest Path Bridging MAC-in-MAC mode
TRILL	Transparent Interconnection of Lots of Links
VPLS	Virtual Private LAN Service
VPN	Virtual Private Network
LDP	Label Distribution Protocol

- A. It enhances multi-data center solutions by extending Layer 2 connectivity across data centers connected at Layer 3.
- B. It provides network administrators with more control over and visibility into communications between virtual machines (VMs).
- C. It increases resilience and high availability within a data center transforming Layer 2 connections into a single fabric.
- D. It enhances security for communications between data centers by automatically establishing encrypted tunnels between sites.

Answer: A

NO.3 Table of Acronyms



The screenshot shows a web browser window with the URL <https://ondemand.questionmark.com/delivery/p...>. The browser displays a table with the following content:

EVI	Ethernet Virtual Interconnect
FCoE	Fibre Channel over Ethernet
L2VPN	Layer 2 Virtual Private Network
MDC	Multitenant Device Context
MPLS	Multiprotocol Label Switching
SPBM	Shortest Path Bridging MAC-in-MAC mode
TRILL	Transparent Interconnection of Lots of Links
VPLS	Virtual Private LAN Service
VPN	Virtual Private Network
LDP	Label Distribution Protocol

A company is using Multi-CE (MCE) to create a multi-tenant data center solution. Administrators want to isolate all functions in a VPN instance "Management". Each switch has an IP address in 10.0.2.0/24 on its Management Ethernet port, and HP IMC manages the switch on these IP addresses. Administrators assign the Management Ethernet interfaces to the "Management" VPN instance. IMC begins losing data from the switches.

How should administrators fix the problem on each switch?

- A. Set VPN instance "Management" as the default VPN instance.
- B. Specify VPN instance "Management" for settings such as the SNMP trap destination
- C. Create a static route to 10.0.2.0/24 through next hop "vpn-instance Management".
- D. Enable route leaking globally and on VPN instance "Management".

Answer: D

NO.4 Refer to the exhibit. (Note: the IDs in the exhibit have been truncated to simplify references to them) An administrator creates user "monitor", who should have read only access to the HP VLAN SDN Controller. The administrator needs to enter this command to finish up the user account.

```
sdn@sdnctl:~$ keystone role-list
```

id	name
94	sdn-user
d0	sdn-admin

```
sdn@sdnctl:~$ keystone tenant-list
```

id	name	enabled
0c	sdn	True

```
sdn@sdnctl:~$ keystone user-list
```

id	name	enabled	email
1c	sdn	True	
9b	rsdoc	True	
a6	monitor	True	

keystone user-add-role --user-ID ID1 --tenant-id ID2 --role-ID ID3

What are the correct values for ID1, ID2, and ID3?

- A. ID1 = 94; ID2 = a6; ID3=0c
- B. ID1 = a6; ID2 = 0c; ID3=94
- C. ID1 = 9b; ID2 = a6; ID3=d0
- D. ID1 = a6; ID2 = 0c; ID3=d0

Answer: B

NO.5 Refer to the exhibit.

```
{
  "flow": {
    "priority": 30000,
    "idle_timeout": 60,
    "match": [
      {"eth_src": "00:50:56:11:11:11"},
      {"eth_dst": "00:50:56:22:22:22"}
    ],
    "actions": [{"output": 1}]
  }
}
```

A company has an HP VAN SDN Controller that controls HP Provision switches. An SDN developer creates an application that needs to make many immediate decisions for handling traffic. The application is programmed to create rules such as those shown in the exhibit

Which change could improve performance by letting the hardware handle the flows?

- A. Change the idle timeout to 0 and specify table ID 200.
- B. Create a service insertion tunnel, and change this rule to output to this tunnel.
- C. Explicitly force this rule to use Table 0.
- D. In the match criteria, list a specific Ethernet type such as IPv4.

Answer: B

NO.6 Refer to the exhibit.

```
zoneset name zoneset1
  member 1
  member 2
  active
zoneset name zoneset2
  member 3
  member 4

zone name 1
  member zone-alias pwwN1
  member zone-alias pwwN2
  member zone-alias pwwN3
  member zone-alias pwwN4

zone name 2
  member zone-alias pwwN5
  member zone-alias pwwN6
  member zone-alias pwwN7

zone name 3
  member zone-alias pwwN8
  member zone-alias pwwN9
  member zone-alias pwwN10

zone name 4
  member zone-alias pwwN11
  member zone-alias pwwN12
  member zone-alias pwwN13
```

The exhibit shows the Fibre Channel (FQ zones that are members of zonesets on an HP Comware switch. How does this zoning affect the FC fabric operation?

- A. Host bus adapter (HBA) pWWNs in zoneset 1 belong to VSAN 1, which is currently active. HBA pWWNs in zoneset 2 belong to VSAN 2, which is inactive
- B. Server pWvVNs in zone 1 can discover targets pWWNs in zone 2. Server pWWNs in zone 3 can discover target pWWNs in zone 4.
- C. A sender pWWN in zone 1 can discover target pWWNs in zone 1. A server pWWN in zone 2 can discover target pWWNs in zone 2.
- D. The switch matches a host bus adapter (HBA) pWWN to entries in zone 1 to determine whether an HBA can connect to a port. If it does not find a match, it checks zone 2.

Answer: D

NO.7 An HP Unified Wired-Wireless controller controls an AP. The AP implements centralized forwarding. It supports 802.11n clients that implement Wi-Fi Multimedia (WMM) or 802.11 e. Some of the clients are sending traffic in high priority WMM queues.

How does the AP help to ensure that this traffic is prioritized in the wired LAN?

- A. It maps 802.11 values from wireless traffic to DiffServ Code Points (DSCP) in packets tunneled to the controller.
- B. It implements 802.11n fair scheduling on the port that connects to the switch.
- C. It maps 802.1p values from wireless traffic to 802.11 e values in packets forwarded into the LAN.
- D. It implements Spectralink and uses Spectralink-to-WMM compliance mode.

Answer: A